

VORSPEISEN | STARTER

01. HANOI ROLLS ^{i,f,b,c}

Frühlingsrollen | Süß-Sauer Soße
spring rolls | sweet-sour sauce

- a. vegetarisch | **vegetarian** 6
- b. Hackfleisch | **minced beef** 7
- c. Meeresfrüchte | **seafood** 8



02. NEM CUON ^{i,b,f}

Sommerrollen | Reismudeln | Ei
Kräuter | Salat | Erdnüsse | Hoisin
summer rolls | rice noodles | egg | herbs |
vegetables | peanuts | hoisin sauce

- a. Bio-Tofu | **bio-tofu** 6
- b. Huhn | **chicken** 6
- c. Garnelen | **shrimps** 6



03. WANTAN CHIEN ^{i,f}

frittierte Teigtaschen | Tofu
Frühlingszwiebeln | Pilzen
fried dumplings | tofu |
spring onions | mushrooms

6.5



VORSPEISEN | STARTER

04. EDAMAME ^{f,m}

gedämpfte Sojabohnen
steamed soy beans

6



05. VIT LA LOT ^{a,b,f}

Betelblätterrolle | Ente | 4 Stk. 8
Schweinehackfleisch
betel leaves rolle |
duck | minced pork



06. EDEN'S CHOICE ^{a,d,f}

Apfel | Birne | Mango | Garnele | 6
Masago | Maracuja-Limetten-Soße
apple | pear | mango | prawns |
masago | passionfruit-lime-sauce



07. GRILLED OYSTER ^{b,f,i}

gegrillte Austern 1 Stk. 5.5
Erdnüssen | Butter |
Lauchzwiebeln
grilled oyster | peanuts |
butter | spring onions



SUPPEN | SOUPS

08. SUP CHUA CAY ^{i,c}

Tomaten | Ananas | Tamarinde
Brühe | Kräuter | Gemüse
tomatoes | pineapple |
tamarind broth | herbs | vegetables



- a. vegetarisch | vegetarian 7
- b. Hackfleisch | minced beef 8
- c. Meeresfrüchte | seafood 9

09. SUP GA ^{b,f,i}

Hühnerbrühe | Ingwer | Kräuter | 8
Glasnudeln | Frühlingszwiebeln |
Huhn |

Chicken broth | ginger |
Herbs | glass noodles |
Spring onion | chicken |



SALATE | SALAD

10. AVOCADO SALAD ^{b,f}

Salat | Avocado | Rucola | 8
Erdnüsse | Kräuter | Cherry Tomaten |
Chili-Limetten Soße
salad | avocado | rocket salad |
Peanuts | herbs |
Cherry tomatoes | chili-lime sauce



11. GREEN PAPAYA ^{b,f}

Papayasalat | Garnele | Karotten | 10
Sesam | Erdnüsse | Kräuter | Cherry
Tomaten | Chili-Limetten Soße
Papaya salad | prawns | carrots |
Sesame | peanuts | herbs |
Cherry tomatoes | chili-lime sauce



12. MIXED SALAD ^{b,f}

saisonale Salate | Cherry Tomaten |
Avocado | Erdnüsse | Karotten |
Maracuja-Limetten-Soße | Kräuter
Seasonal salad | cherry tomatoes | avocado |
Peanuts | parrots | passionfruit-lime-sauce | herbs



- a. Bio-Tofu | bio-tofu 8
- b. gegrilltes Hähnchenbrustfilet | 9
grilled chicken breast
- c. gegrilltes Entenbrustfilet | 13
grilled duck breast
- d. Entrecôte | Entrecôte (200g) 16
- e. Tigergarnelen | tiger prawns 13
- f. gegrilltes Lachsfilet | 15
grilled salmon fillet

NUDELGERICHTE | NOODLE DISHES

13. PHO SPECIAL ^{i,c}

Reisbandnudelsuppe | Lauchzwiebeln
Sojasprossen | Kräuter
Flat rice noodle soup | spring onion |
Soy sprouts | herbs | vegetables

a. Huhn | chicken

16

b. Entrecôte | Entrecôte (200g)

18



14. PHO VEGAN ^f

Gemüsebrühe | Kräuter | Tofu | Gemüse
Sojasprossen | Reisbandnudeln
Vegetable broth | herbs | tofu | vegetables |
soy | sprouts | flat rice noodles

15



15. WANTAN SOUP VEGAN ^{f,i}

frittierte Teigtaschen | Gemüsebrühe
Tofu | Kräuter | Gemüse | Reismudeln
fried dumplings | vegetable broth | tofu |
herbs | vegetables | rice noodles

15



16. FRIED UDON NOODLES ^{b,f,i,c}

Udon Nudeln | Kräuter | Gemüse |
Sojasprossen | Austernsoße |
Udon noodles | herbs | vegetables |
Soy sprouts | oyster sauce

a. Bio-Tofu | bio-tofu

16

b. gegrilltes Hähnchenbrustfilet
grilled chicken breast

17

c. Entrecôte | Entrecôte

20

d. Tigergarnelen | tiger prawns

17



17. PHO TRON ^{b,f,i}

Warme Reisbandnudeln | Salat |
Erdnüsse | Kräuter | Zwiebeln |
Hoisin Soße |

Flat rice noodles | salat | peanuts
| herbs | onion | hoisin sauce



- | | |
|---|----|
| a. Bio-Tofu bio-tofu | 15 |
| b. gegrilltes Hähnchenbrustfilet
grilled chicken breast | 16 |
| c. gegrilltes Entenbrustfilet
grilled duck breast | 18 |
| d. Entrecôte Entrecôte | 20 |
| e. Tigergarnelen tiger prawns | 18 |

18. BUN SALAD ^{d,f}

Reisnudelsalat | Kräuter |
Erdnüsse | Chili -Limetten Soße
**Rice noodle salad | herbs |
Peanuts | chili-lime sauce**



- | | |
|---|----|
| a. gegrilltes Hähnchenbrustfilet
grilled chicken breast | 16 |
| b. gegrilltes Schweinefleisch
grilled pork meat | 16 |
| c. Betelblätterrollen
betel leave rolls | 16 |

REISGERICHTE | RICE DISHES

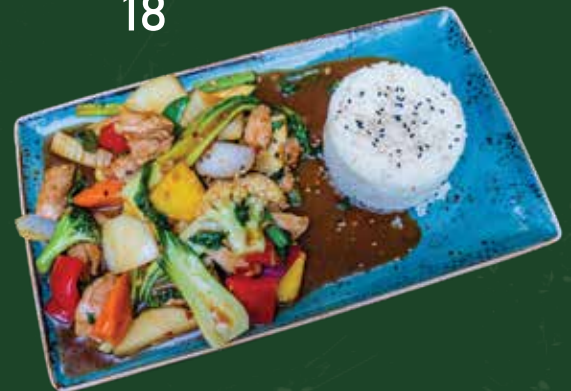
Wähle deine Reissorte | Choose your rice:

- a. Jasmin Reis | jasmine rice
- b. roter Vollkornreis | red cargo rice +1.5

19. VIT XAO ^{b,f}

Entenbrustfilet | Gemüse |
Ananas | Erdnüsse | Kräuter |
Hoisin Soße | Reis |
Duck breast | vegetables |
Peanuts | Herbs |
Hoisin sauce | rice

18



20. RED CURRY ^{d,b,f,i}

Curry Soße | Gemüse |
Kokosmilch | Kräuter | Reis
curry sauce | vegetables |
Coconut milk | herbs | rice



- a. Bio-Tofu | bio-tofu 17
- b. Huhn | chicken 18
- c. Ente Kross | crispy duck 20
- d. Entrecôte | Entrecôte (200g) 20
- e. Tigergarnelen | tiger prawns 20
- f. gegrilltes Lachsfilet |
grilled salmon fillet 20

21. GOLDEN RIVER ^{f,d}

Ingwer Soße | Gemüse |
Kräuter | Reis |
Ginger sauce | vegetables |
Herbs | rice

- a. gegrilltes Entenbrustfilet 20
grilled duck breast
- b. Entrecôte | Entrecôte (200g) 20



22. EDEN'S PASSION ^{d,a,f}

Ingwer+Maracuja-Limette Soße
Gemüse Kräuter | Reis
ginger+passionfruit-lime-sauce
vegetables | herbs | rice

- a. gegrilltes Lachsfilet 20
grilled salmon filet
- b. Oktopus Tentackeln 20
octopus tentacles



23. THI LA CA ^{i,d,b,f}

Dill Soße | gegrillte Dorade |
Gemüse | Kräuter | Reis
dill sauce | grilled sea bream |
vegetables | herbs | rice

20



SHARING IS CARING

F1. EDEN GRILL PLATE ^{b,i,f,d} (4-5 PERSONEN | PEOPLE)

Grillplatte | gegrillte Dorade | Garnelen | Tofu | 70
gegrilltes Schweinefleisch | Betelblätrollerollen
| Salat | Reisnudeln | Kräuter | Hoisin Soße
grill plate | grilled sea bream | prawns | tofu | grilled pork |
betel leave rolls | salad | rice noodles | herbs | hoisin sauce

F2. EDEN SUMMER ROLL PLATE ^{b,i,f,d} (do it yourself)

gegrilltes Hühnerbrustfilet | gegrilltes
Schweinefleisch | Garnelen | Tofu | Ei | Reisnudeln
| Salat | Kräuter | Reispapier | Hoisin Soße
grilled chicken breast | grilled pork | prawns | tofu | egg |
rice noodles | salad | herbs | rice paper | hoisin sauce

a. 2 Personen | 2 people 48

b. 4 Personen | 4 people 68

F3. VIETNAMESE HOTPOT ^{b,i,c} (4-5 PERSONEN | PEOPLE)

Hühnerbrühe | Tofu | Pilzen | Kräuter
| Gemüse | Reisnudeln | Fischsoße |
chicken broth | tofu | mushroom | herbs
| vegetables | rice noodles | fish sauce

a. Meeresfrüchte | seafood 75

b. Froschschenkel | frog legs 75



F1



F2



F3

KIDS PORTION

30. CHICKEN FEVER ^{i,d,f}

gegrilltes Hühnerbrustfilet | 8
Pommes | Ketchup/Mayonaise
grilled chicken breast | french fries |
ketchup or mayonaise

31. GOLDEN PRAWNS ^{i,d,f}

gebackene Garnelen | Pommes 8
Ketchup oder Mayonaise
baked prawns | french fries |
ketchup or mayonaise

32. MINI PHO ^{b,i}

Reisbandnudelsuppe | 8
Lauchzwiebeln
| Sojasprossen | Kräuter
flat rice noodle soup | spring onion
| soy sprouts | herbs

a. Huhn | chicken 10
b. Entrecôte | Entrecôte (100g) 10

DESSERT

D1. MOCHI RICE CAKE ^{i,d,f}

Reisteig | Füllung 3 Stk. 6
rice cake | stuffing
a. Kokosnuss | coconut
b. Taro | taro

D2. BAKED BANANA ^{i,d,f}

gebackene Banane | Honig | 6
Kokosraspeln
baked banana | honey | desiccated coconut

D3. CHE TROI NUOC ^{i,d}

Klebreiskugeln | Bohnenpaste 6
| Kokosmilch | Sesam
sticky rice balls | bean paste | coconut
milk | sesame

D4. KLEBREIS-PUDDING ^{d,h,i}

schwarzem Klebreis | Kokosmilch 6
| Kondensmilch | Joghurt |
Kokosraspeln | Crushed Eis
black sticky rice | coconut milk | condensed
milk | yogurt | desiccated coconut | crushed ice

D5. TARO-PUDDING ^{d,h,i}

Taro | Kokosmilch | 6
Kondensmilch | Zucker |
Erdnüsse | Kokosraspeln |
Crushed Eis
taro | coconut milk | condensed milk |
sugar | peanuts | desiccated coconut |
crushed ice

D6. MIX-PUDDING ^{d,h,i}

rote Bohnen | Mungbohnen | 6
Kokosmilch | Kokosraspeln |
Erdnüsse Gelee | Kondensmilch |
Crushed Eis
red beans | mung beans | coconut milk |
desiccated coconut | peanuts | jelly |
condensed milk | crushed ice

GETRÄNKE | DRINKS

WATER & SOFT DRINKS

180. Wasser STILL / LAUT

0.2l 0.75l

3.5 7

0.2l 0.4l

181. Coca Cola/Zero ^{1,3,9}

3.5 4.9

182. Sprite ^{2,3}

3.5 4.9

183. Ginger Ale ¹

3.5 4.9

184. SAFT/SCHORLE | JUICE/SPRITZER

Orange | orange

3.5 4.9

Ananas | pineapple

3.5 4.9

Maracuja | passion fruit

3.5 4.9

Apfel | apple

3.5 4.9

Schwarze Johannisbeere

3.5 4.9

| black currant

COFFEE

185. EDEN ESPRESSO 4.9

Kondensmilch
condensed milk

186. EDEN EISKAFFEE 4.9

Kondensmilch
Crushed Eis
condensed milk | crushed ice

187. ESPRESSO 2.9

188. LATTE MACCHIATO 3:5

189. CAPPUCINO 3:5

190. KAFFEE 3:5

HOT DRINKS

191. TRA JASMINE / JASMIN TEA 4.9

192. TRA XANH / GREEN TEA 4.9

193. TRA BAC HA/ PEPPERMINT TEA 4.9

194. TRA SA / LEMONGRASS TEA 4.9

195. TRA GUNG / GINGER TEA 4.9

Ingwer | Minze | Honig
ginger | mint | honey

196. TRA CHANH XA / LEMONGRASS TEA 4.9

Limetten | Ingwer | Zitronengras | Honig
lime | ginger | lemongrass | honey

197. TRA HOA HONG / ROSE TEA 4.9

Rosenknospen | Gojibeeren | Honig
rose buds | goji berries | honey

HOMEMADE DRINKS

198. DA CHANH

Limettensaft | Sodawasser | 6.5
Minze | Gurke |
Rohrzucker | Crushed Eis
lime juice | soda | mint | cucumber |
cane sugar | crushed ice

200. SA DA

Zitronengras | Himbeer 6.5
Eistee | Rohrzucker |
Crushed Eis
lemongrass | raspberry ice tea | cane
sugar | crushed ice

202. MANGO LASSI

Mango | Kokosmilch | Sahne | 6.5
Ingwer | Kondensmilch |
Rohrzucker | Crushed Eis
mango | coconut milk | cream | ginger |
condensed milk | cane sugar | crushed ice

204. PINK MELON

Wassermelone | Litschi | 6.5
Zucker | Crushed Eis
watermelon | lychee | sugar | crushed ice

206. FRESH COCONUT WATER

Kokoswasser | coconut water 6.5

199. TRA DA

Grüntee | Crushed Eis | 6.5
Ingwer | Rohrzucker |
Limettensaft
greentea | crushed ice | ginger | cane
sugar | lime juice

201. VIETNAM LIME

Limetten | Minze | Himbeeren 6.5
| Ingwer | Ginger Ale |
Rohrzucker | Crushed Eis
lime | mint | raspberries | ginger |
ginger ale | cane sugar | crushed ice

203. AVOCADO LASSI

Avocado | Kokosmilch | Sahne 6.5
| Ingwer | Kondensmilch |
Rohrzucker | Crushed Eis
avocado | coconut milk | cream | ginger |
condensed milk | cane sugar | crushed ice

205. FRESH SUGAR CANE JUICE

Rohrzuckersaft | sugar cane juice 6.5

207. FRESH ORANGE JUICE

Orangensaft | orange juice 6.5

208. LYCHEE ON ICE

Litschi Eistee | Schwarz Tee | 6.5
Litschi | Limettensaft | Minze |
Rohrzucker | Crushed Eis
lychee ice tea | black tea | lychee | lime
juice | mint | cane sugar | crushed ice

COCKTAILS / NON ALCOHOLIC

209. DUA BY NIGHT

Kokosnusssirup | Ananassaft | 7.9
 Sahne | Grenadine | Crushed Eis
 coconut syrup | pineapple juice | cream |
 grenadine | crushed ice



210. HUE LAVENDEL

Limettensaft | brauner Zucker | 7.9
 Kokosmilch | Lavendelsirup |
 Crushed Eis
 lime juice | brown sugar | coconut milk |
 lavender syrup | crushed ice

BEER

VOM FASS | DRAFT BEER

0.3l 0.5l

225. HEINEKEN

4.5 6.5

226. TIGER BEER

4.5 6.5

FLASCHENBIER | BOTTLED BEER

0.3l 0.5l

227. TIGER BIER

4

228. BERLINER PILSENER

5.5

229. PAULANER WEIZENBIER

a. Banane | banana 5.5
 b. Hefe | yeast 5.5
 c. Alkoholfrei | non alcoholic 5.5
 d. Kristall | crystal 5.5

129. ALSTER / DIESEL

a. Coca Cola 5.5
 b. Sprite 5.5



● COCKTAILS / ALCOHOLIC

211. NANG VANG

Mango | Ingwer | Orangensaft | 8.5
Crushed Eis | Vodka
mango | ginger | orange juice
| crushed ice | vodka

213. HANOI MULE

Ingwer | Limetten | Ginger Ale | 8.5
Crushed Eis | Nep Moi
ginger | lime | ginger ale | crushed ice
| nep moi

215. THAP CAM DELUXE

Banane | Ananassaft | Kokosmilch 8.5
| weißer Rum | Crushed Eis
banana | pineapple juice | coconut milk
| white rum | crushed ice

217. MOJITO

Rum | Rohrzuckersirup | 8.5
Limettensaft Minze | Soda
rum | cane sugar syrup | lime juice |
mint | soda

219. PINA COLADA

weißer Rum | Kokosnuss 8.5
Sirup | Sahne | Ananassaft
white rum | coconut syrup | cream |
pineapple juice

221. BLACK BOMBAY

Bombay Sapphire Gin | 8.5
Zitronensaft | Blue Curacao |
Maracuja | Johanisbeernektar
Bombay Sapphire Gin | lemon juice | Blue
Curacao | passion fruit | currant nectar

224. CAIPIRINHA

Pitu Cachaca | brauner Rohrzucker 8.5
| Limettensirup | Limette
Pitu Cachaca | brown cane sugar
lime syrup | lime

212. HOANG HON DO

Limettensaft | brauner Zucker | 8.5
Himbeeren | Passionsfrucht |
Limetten | Chili | Crushed Eis | Vodka 8.5
raspberry | passion fruit | lime |
chili | crushed ice | vodka

214. SAIGON RIVER

weißer Rum | Maracuja | Limetten 8.5
Minze | Rohrzucker | Crushed Eis 8.5
white rum | passion fruit | lime | mint
| cane sugar | crushed ice

216. MEKONG DELTA

Mekong Rum | Coca Cola | 8.5
Crushed Eis 8.5
Mekong rum | Coca Cola | crushed ice

218. STRAWBERRY MOJITO

Rum | Rohrzuckersirup | 8.5
Limettensaft | Minze | Soda | 8.5
Erdbeersirup
rum | cane sugar syrup | lime juice |
mint | soda | strawberry sirup

220. STRAWBERRY COLADA

weißer Rum | Kokosnuss 8.5
Sirup | Sahne | Ananassaft | 8.5
Erdbeersirup
white rum | coconut syrup | cream |
pineapple juice | strawberry sirup

222. TROPICAL DERBY

Tanqueray Gin | Ananassaft | 8.5
Maracuja | Zitronensaft | Grenadine 8.5
| Orangensaft
Tanqueray gin | pineapple juice |
passion fruit | lemon juice |
grenadine | orange juice

223. MOSCOW MULE

Vodka | Ginger Beer | 8.5
Limettensaft | Gurke
Vodka | ginger beer | lime juice |
Cucumber

● WEIN | WINE

WEIßWEIN | WHITE WINE

0.1l

0.75l

130. RIESLING GUTSWEIN - RICHARD RICHTER

a. Trocken | dry

4.5

28

b. Feinherb | off- dry

4.5

28

Honigmelone | reifen Zitrusfrüchte | fruchtig
honey melon | mellow citrus fruits | Fruity

131. GRAUBURGUNDER SINFONIE - ADAM MÜLLER

Trocken | dry

4

27

nussig | zarte Mandeltöne

nutty | subtly almond flavours

132. CHARDONNAY - CASTILION - PÉRE & FILS

Trocken | dry

4

25

reife Kiwifrüchte | Bittermandeln

ripe kiwi fruits | bitter almond taste

133. GRÜNER VELTLINER - MANTLER

Trocken | dry

4

25

leicht fruchtig | pfeffrige Töne

slightly juicy | peppery finish

ROTWEIN | RED WINE

0.1l

0.75l

134. MERLOT - CASTILION - PÉRE & FILS

Trocken | dry

4

27

reife Kirschen | feine Würze

ripe cherries | fine spice

135. CABERNET SAUVIGNON - CASTILION - PÉRE & FILS

Trocken | dry

4

27

rote Beerenfrüchte | feine Tannine

red berry fruits | fine tannins

136. TAMPRANILLO GARNACHA - NEKEAS

Trocken | dry

4

27

pfeffrig | leicht zimtig | fruchtig | schwarze Beeren

peppery, light cinnamon | fruity | black berries

137. SPÄTBURGUNDER - ADAM MÜLLER

fruchtig | fruity

4

27

dunkle Beerenfrüchte | dark berry fruits

● WEIN | WINE

ROSE

0.1l

0.75l

138. SPÄTBURGUNDER - ADAM MÜLLER

feinherb | off-dry
reife Beerenfrüchte | fruchtige Himbeeraromen
ripe berry fruits | fruity raspberry aroma

4.5

27

WEINFLASCHEN | WINE BOTTLE

WEISS | WHITE

0.75l

139. CHARDONNAY BARRICA

exotische Früchte | Nüsse und Vanille | zarte Honig- und
Limettentöne | Orangenschalen | reife Äpfel
exotic fruits | nuts and vanilla | subtle honey and lime flavors |
orange peel | ripened

41

140. RIESLING FELSETERASSEN

würzig trocken | fullflavored dry

52

ROT | RED

0.75l

141. DOGAJOLO CHIANTI

rubinrot | fruchtige Kirscharomen | Vanille | Kaffee
ruby red | fruity cherry aromas | vanilla | coffee

47

142. CUVÉE BEAUCHAMP

purpurrot | süße schwarze Beeren | Lakritze |
Tabak | pfeffrig | reife, rote Südfrüchte
Deep purple | sweet black berries | licorice | tobacco |
Peppery | ripened, red southern fruits

47

Aperitif

143. APEROL SPRITZ

Aperol | Proceso | Oragenscheiben | Eis
Aperol | sparkling wine | orange slices | ice |

0,3l 7.9

144. Weissweinschorle

0,3l 6.5

145. SHOTS

VODKA | GIN | WHISKEY | JÄGERMEISTER |
RUM | BAILEYS | TEQUILA SILVER | MALIBU |

2cl.

4

ALLE PREISE IN EUR, INKL. MWST
Bilder dienen zur Dekoration und sind der Abbildung ähnlich.
Änderungen und Irrtümer vorbehalten

Allergene

- a) Ei/ egg
- b) Fisch/ fish
- c) Schalentiere/ shellfish
- d) Milch/milk
- e) Sellerie
- f) Sesam/ sesame,
- g) Sulfit/ sulfite
- h) Erdnüsse/ peanuts
- i) Gluten/ gluten
- j) Lupine/ lupine,
- k) Schalenfrüchte,
- l) Senf/ mustard,
- m) Soja/ soy
- n) Weichtiere/ molluscs

Zusatzstoffe

- 1 = mit Farbstoffen
- 2 = mit Konservierungsstoffen
- 3 = mit Antioxidationsmittel,
- 4 = mit Geschmacksverstärkern 5 = geschwefelt
- 6 = geschwärzt
- 7 = mit Phosphat
- 8 = mit Milcheiweiß
- 9 = koffeinhaltig
- 10 = chininhaltig
- 11 = mit Süßungsmitteln
- 12 = enthält eine Phenylalaninquelle,
- 13 = gewachst
- 14 = mit Nitritpökelsalz
- 15 = Taurin
- 16 = Tartrazin

(kann die Aktivität und Aufmerksamkeit von Kindern beeinflussen)